

CROSSMAX SLR DISC 09



09

USE: use only on a Cross Country MTB fitted with disc brakes. Any other use (such as on a tandem, road bike, cyclo-cross bike, free-ride or downhill bike...) is highly inadvisable, is the sole responsibility of the user and voids the Mavic warranty.

Recommended maximum weight of the cyclist and his equipment: 85 kg.

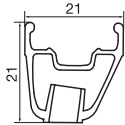
WHEEL WEIGHTS WITHOUT QUICK-RELEASE SKEWER

Front: 690 g
Rear: 830 g

WHEEL REFERENCES

Front: 996 412 10
Rear: 996 413 13
Pair: 996 414 14

RIMS	REFERENCES: Front: 996 873 10 Rear: 996 873 13
-------------	---



Ø VALVE HOLE



Ø: 6.5 mm
Length.: ≥ 32 mm

RECOMMENDED TIRE WIDTH



Dimensions: Ø 26"
ETRTO 559 x 17C compatible and Tubeless UST.
Recommended tire width: 1.0" to 2.1"

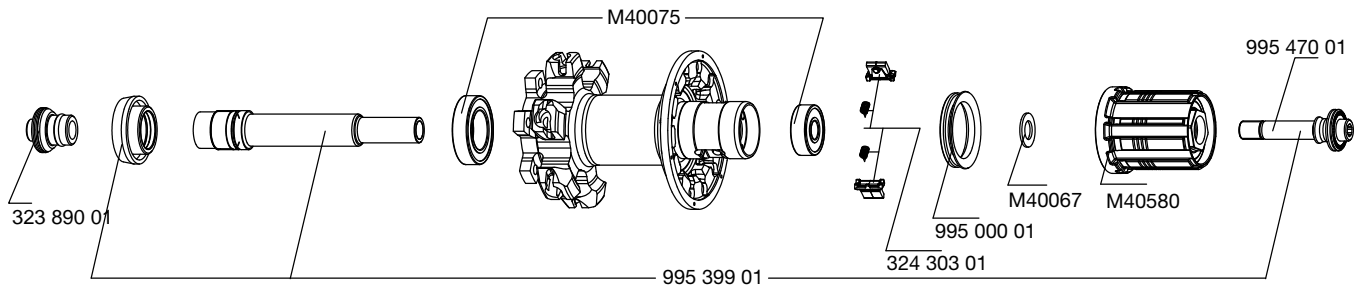
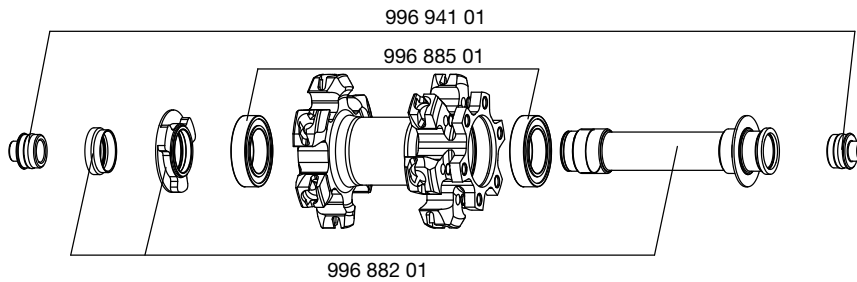
When replacing the front rim:

1. With the valve hole near you, the raised indicator bump must be to the **right** of the valve hole
2. The spoke in the first hole to the right of the valve hole is a non-braking spoke and should be inserted in the disc side

When replacing the rear rim:

1. With the valve hole near you, the two raised indicator bumps must be to the **right** of the valve hole
2. The spoke in the first hole to the right of the valve hole should be inserted on the drive side in a marked hole on the hub

HUBS	MAINTENANCE: Clean with a dry cloth or soap and water if necessary. Do not use a high-pressure washer.
-------------	---



WHEEL BUILDING	REFERENCES AND LENGTHS: Front: 995 376 01, length 261 mm, (per 12 + 3 red, integrated nipples) Rear drive side: 995 377 01, length 248 mm, (per 12 + 1 red, integrated nipples) Rear non-drive side: 996 874 01, length 263 mm, (per 12 + 2 red, integrated nipples)
-----------------------	--

FEATURES: Black Zicral double butted straight pull spokes (including two decorated per wheel) with integrated, self-locking M7 aluminum spoke nipples.	LACING PATTERN: Front: crossed 2 on both sides Rear: Isopulse		TENSION: Front disc side: 120 to 140 kg Rear drive side: 120 to 140 kg
--	--	--	---

ACCESSORIES	WHEELS SUPPLIED WITH:	MAINTENANCE
<ul style="list-style-type: none"> • BX 601 Titanium front quick-release skewer 995 388 01 • BX 601 Titanium rear quick-release skewer 995 389 01 • Computer magnet M40540 (with front wheel) • Spoke wrench M40494 (with rear wheel) • Axle reducers 15=>9 mm 996 941 01 (with front wheel) • UST valves 995 282 01 • Free play bearing adjustment wrench M40123 (with rear wheel) • User guide 		<p>Front hub assembly diameter conversion See page 25</p> <p>Replacing the front axle and bearings See page 26</p> <p>Replacing the rear axle See 2007 TM, page 20</p> <p>Maintaining and replacing the free wheel mechanism See 2007 TM, page 21</p> <p>Replacing the rear bearings See 2003 TM, page 22</p> <p>Replacing a spoke See 2003 TM, page 24</p> <p>Replacing the front rim See page 37</p> <p>Replacing the rear rim See 2006 TM, page 17</p> <p>To consult this information quickly in a practical manner, refer to www.tech-mavic.com</p>